

Ultrareach Magnetic Separator

DESCRIPTION

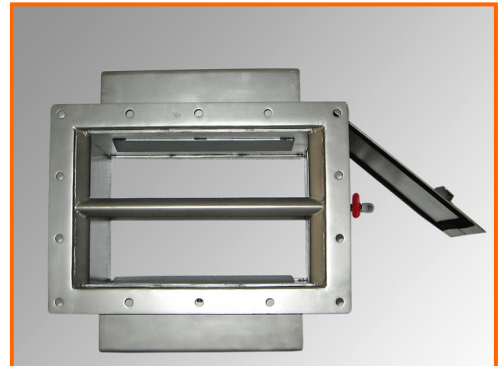
Swenco Ultrareach Magnetic Separator is typically installed on vertical gravity flow lines, to trap ferrous contamination from product flow. It is recommended for installation when lumpy products are being handled. These products which are lumpy tend to choke when fed through a Grate in Housing.

The separator has two powerful magnetic assemblies with deep field assembled on opposite sides of a Stainless Steel housing provided with an inspection door for frequent cleaning of the magnetic faces.

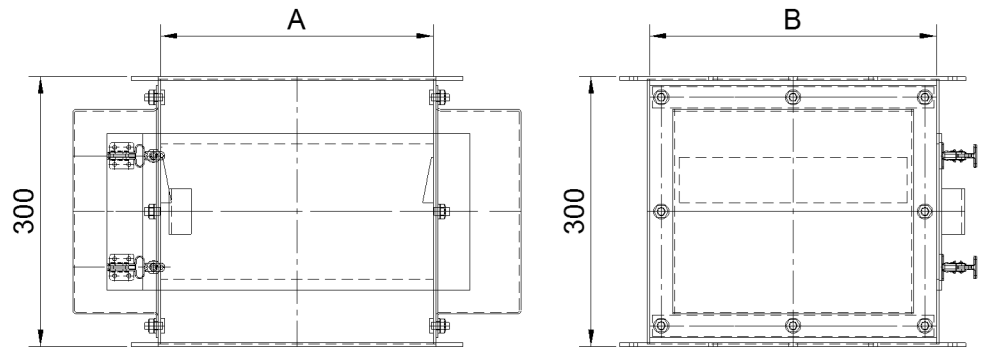
A stainless steel deflector deflects the material to either of the magnetic faces thus ensuring efficient separation.

FEATURES

- Two powerful magnets with Deep Magnetic field
- Stainless Steel—SS304 housing with inspection door
- Central deflector in stainless steel
- Quick release toggle clamp
- Flanges drilled for ease of installation
- Available in 3 sizes



MODEL	A	B
URM080812	204	220
URM101012	254	270
URM121212	304	320



All dimensions are in mm.
* Dimensions are subject to alteration without prior notice